

USER MANUAL

# PathoScan

MODEL PS.1001



Thank you for buying the Euromex Pathoscan 10,000 DPI slide scanner.

To guarantee the best product experience, please read the user manual carefully before use

## PARTS LIST

PathoScan slide scanning unit (PS. 3001) .....	1 PC
Double slide holder (PS. 3001) .....	1 PC
CD-Rom PathoView software .....	1 PC
User Manual .....	1 PC

## PRODUCT OVERVIEW



## INSTALLATION

### COMPUTER SYSTEM REQUIREMENT

- Microsoft Windows XP, Vista, Windows 7
- 100 MB Free hard disk space
- 16 Bit color display
- CD or DVD Driver
- Pentium® or AMD Athlon™ processor or higher
- 512 MB RAM or more
- USB port

### INSTALLING SOFTWARE AND DRIVER

- Double click on the PathoView icon to start the installation process.
- Follow the onscreen prompts to complete the installation process.

#### NOTE

Make sure that the PathoScan is NOT connected to the computer during the PathoView driver installation

### INSTALLING HARDWARE

- Connect the PathoScan to a power source
- Locate the power switch on the lower left side of the PathoScan.  
Make sure the Pathoscan is TURNED OFF
- Plug the AC adapter into an AC power source first before plugging it into the PathoScan
- Attach the USB cable to the computer using the standard USB adapter end.  
Attach the USB adapter end of the cable to back panel of the PathoScan

#### To scan with the double slide holder or polarization slide holder:

- Load the tissue slide(s) (25 x 76 mm) into the tissue slide holder
- Insert the tissue slide holder into the PathoScan with the arrow facing upwards
- Insert to holder into the PathoScan from the left or the right side



# HOW TO SCAN A SLIDE

## ACQUIRE DRIVER

### How to scan a slide

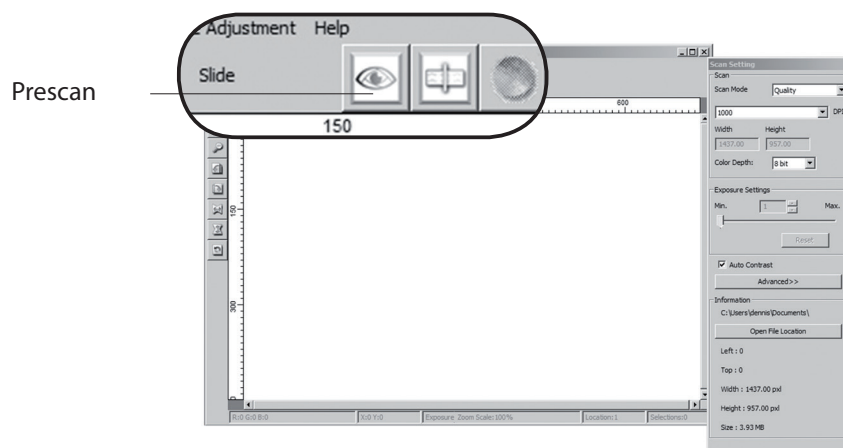
(For PC User) Open PathoView from Start > All Programs > PathoView

(For MAC User) Open Macintosh Hard drive > Applications > PathoView

## OPTIONAL PRESCAN

- Select the Scan Prescan Slide to prescan the slide currently loaded into the PathoScan or select the Prescan icon from the toolbar to prescan the sample

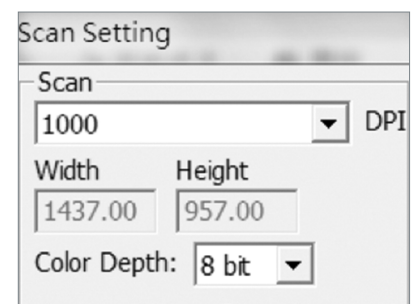
Pre-scanning should be used to manually adjust color/edit settings for each slide before doing the final scan. It's possible to set different settings for each slide to be scanned



## SET SCAN SETTINGS

### RESOLUTION

The default scanning resolution is 1,000 dpi, additional resolution options can be selected in dropdown menu.



### NOTE

Higher scanning resolutions result in longer scanning time and more space in the hard disk

## COLOR DEPTH

- Choose between 8 and 16 bit.  
A higher color depth setting will result in a larger range of colors in the final scanned image
- The PathoScan color depth is 48 bit true color
- The PathoView software has the capability of selecting 8 bit color mode or 16 bit color mode when scanning.  
This will produce 24 or 48 bit color images, 8 bits or 16 bits per Red, Green and Blue color channels

### NOTE

Selecting JPG file format automatically converts the images to 8 bit when saved

### Example:

8 bit mode = 8 Red, 8 Green, and 8 Blue for a total of 24 bit color

16 bit mode = 16 Red, 16 Green, and 16 Blue for a total of 48 bit color

## EXPOSURE SETTINGS

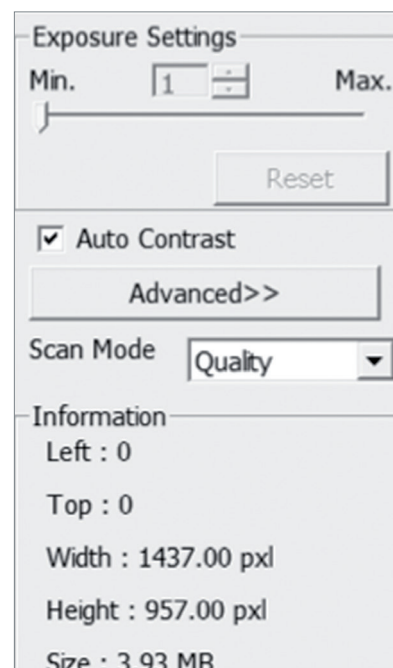
Exposure time can be set from 1 (Min) to 10 (Min).  
Different slide samples will use different exposure setting to simulation dark field or bright field

## AUTO CONTRAST

The PathoView analyzes the data and automatically adjusts the setting for the white and black points

## SCAN MODE

- Normal mode produces a scan in .jpeg format
- Quality produces a non-compressed, "loss-less" .tiff image



## SET SCAN PREFERENCES

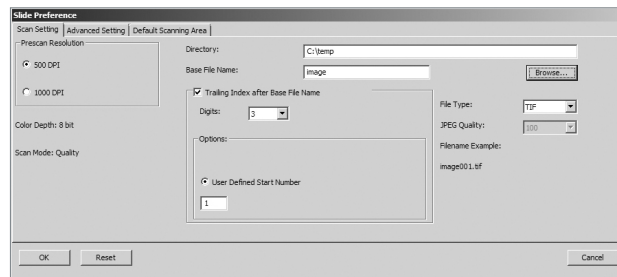
Select Scan > Preference > Slide.

- PRESCAN RESOLUTION - Default pre-scan resolution.
- COLOR DEPTH – Default color depth while scanning.
- SCAN MODE – Default scan mode while scanning.

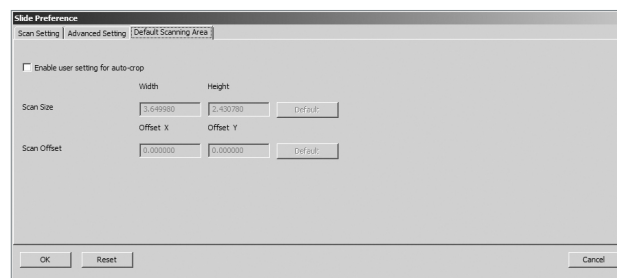
## SET SCAN PREFERENCES

### Configuring scan preferences

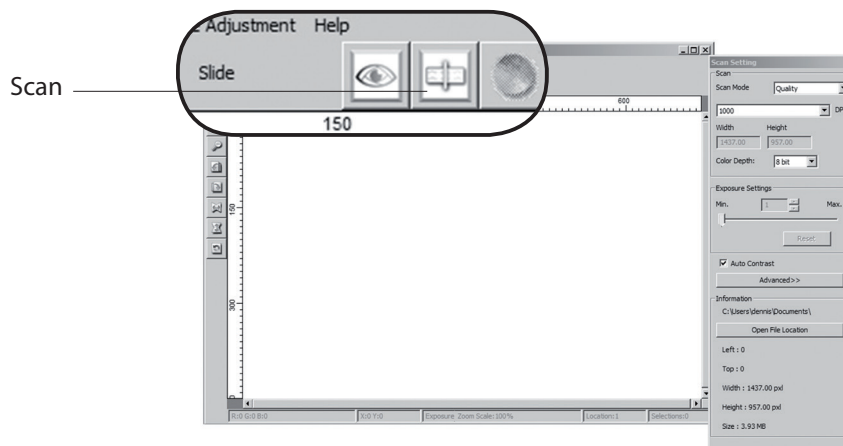
1. Select BROWSE and choose the designated folder to save the scanned image to.
2. Enter the file name.
3. Trailing Index after Base File Name Digits: Defines the length of the file name and numbering sequence up to 6 digits Example image1 or image 000001.



**DEFAULT SCANNING AREA** - Adjust the cropping area as well as adjust the SCAN OFFSET setting to move the image position of slide



**SCAN** - Scan Current Frame or the SCAN icon from the toolbar



**EXIT** - Select SCAN > EXIT to close the driver.

Scanned image files can be open/edited with any image editing software.

## SPECIFICATIONS

<b>Resolution</b>	10,000 x 10,000 dpi
<b>Signal</b>	Expression Color
<b>Dynamic Range</b>	3.8
<b>Scanning Area</b>	24.3 x 36.5 mm (H x W)
<b>Scanning Medium</b>	76 x 26 mm slides
<b>File Format</b>	Saving in JPG, TIFF format
<b>Light Source</b>	Transmission white LED
<b>Operating System</b>	Windows XP/Vista/7/8/10 Intel-based Mac OS X 10.5/10.6 /10.7/10.8
<b>Power supply</b>	100- 240 AC Adapter, 12 V 1.5
<b>Supplied with</b>	Double slide holder, 100-240 V power supply, USB-2 cable, PathoView scanning software and user manual
<b>Model</b>	PS.1001
<b>PS.1001</b>	PathoScanner 10,000 DPI slide scanner
<b>PS.3001</b>	Double slide holder
<b>PS.3002</b>	Polarization slide holder, for one slide

### HEADQUARTERS

#### Euromex Microscopen bv

Papenkamp 20  
6836 BD Arnhem  
The Netherlands  
Tel: +31 (0) 26 323 22 11  
info@euromex.com

### SALES EXPORT OFFICE

#### Euromex Microscopen Spain sl

Carretera de Barcelona 88, Entresuelo  
Edificio Technomar  
08302 Mataró, Spain  
Tel: +34 (0) 937 415 609  
info@euromex.com

[WWW.EUROMEX.COM](http://WWW.EUROMEX.COM)