

Fluorescence filter sets

FOR ORDERING

For ordering a specific fluorescence filter set find the fluorochrome you need and add the filter set reference 'xxxx' as follows:

FOR ISCOPE:

IS.9750.xxxx/6, iScope® with 6-position fluorescence attachment, needs also empty block IS.9749/6

IS.9750.xxxx/3 iScope® with 3-position fluorescence attachment, needs also empty block IS.9749/3

FOR DZ SERIES:

DZ.9750.xxxx, this set is supplied with two emission filters and also needs empty block DZ.9749

FOR DELPHI-X OBSERVER/INVERSO:

DX.9750.xxxx, Delphi-X Observer™ with 6-position fluorescence attachment, needs also empty block DX.9749/6

DI.9750.xxxx, Delphi-X Inverso™ with 6-position fluorescence attachment, needs also empty block DI.9749/6

FOR OXION SERIES:

OX.9750.xxxx Oxion inverso with 3-position fluorescence attachment, needs also empty block OX.9749/3

OX.9750.xxxx Oxion inverso with 4-positions fluorescence attachment, needs also empty block OX.9749/4

AE.3250.xxxx, Oxion upright with 4-positions fluorescence attachment, needs also empty block AE.3249

OPTIMIZED FILTER SETS

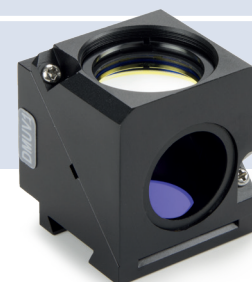
19xxx series is an optimized filter set with long pass filter

39xxx series is a standard optimized filter set

49xxx series is a zero-pixel shift optimized filter set

EXAMPLE:

the reference for the iScope® with a 39001 filter set is IS.9750.39001



● AE.3248

Acridine Orange DNA - EX: 500 nm EM: 526 nm

EX: **465-495** nm DM 505 nm EM: **515** nm (LP) • 19002

EX: **465-495** nm DM 505 nm EM: **590-650** nm • 39009

EX: **460-500** nm DM 510 nm EM: **510-560** nm • 49011

Acridine Orange DNA+RNA - EX: 500 nm EM: 526 nm

EX: **460-500** nm DM 510 nm EM: **510** nm (LP) • 49011

Alexa Fluor 488™ - EX: 498 nm EM: 520 nm

EX: **460-500** nm DM 510 nm EM: **510-560** nm • 49011

Alexa Fluor 514™ - EX: 517 nm EM: 539 nm

EX: **485-505** nm DM 515 nm EM: **525-555** nm • 39003

EX: **490-510** nm DM 515 nm EM: **520-550** nm • 49003

Alexa Fluor 546™ - EX: 556 nm EM: 573 nm

EX: **528-553** nm DM 565 nm EM: **578-633** nm • 39004

EX: **532-557** nm DM 605 nm EM: **570-640** nm • 49004

Alexa Fluor 555™ - EX: 553 nm EM: 568 nm

EX: **528-553** nm DM 565 nm EM: **578-633** nm • 39004

EX: **532-557** nm DM 605 nm EM: **570-640** nm • 49004

Alexa Fluor 568™ - EX: 578 nm EM: 603 nm

EX: **540-580** nm DM 600 nm EM: **615-665** nm • 39010

EX: **540-580** nm DM 585 nm EM: **593-667** nm • 49008

Alexa Fluor 594™ - EX: 590 nm EM: 617 nm

EX: **540-580** nm DM 600 nm EM: **615-665** nm • 39010

Alexa Fluor 647™ - EX: 649 nm EM: 666 nm

EX: **595-645** nm DM 655 nm EM: **665-715** nm • 39007

EX: **590-650** nm DM 660 nm EM: **663-737** nm • 49006

EX: **625-655** nm DM 660 nm EM: **665-715** nm • 49009

AmCyan - EX: - 458 nm EM: 489 nm

EX: **425-445** nm DM 455 nm EM: **465-495** nm • 39001

Auramine longpass - EX: 460 nm EM: 550 nm

EX: **425-475** nm DM 485 nm EM: **495** nm (LP) • 19008

Auramine-rhodamine - EX: 450 nm EM: 550 nm

EX: **465-495** nm DM 485 nm EM: **515** nm (LP) • 19002

Azami Green - EX: 492 nm EM: 505 nm

EX: **465-495** nm DM 505 nm EM: **515-555** nm • 39002

EX: **450-490** nm DM 525 nm EM: **500-550** nm • 49002

Biosearch Blue - EX: 352 nm EM: 447 nm

EX: **361-389** nm DM 415 nm EM: **435-485** nm • 39000

BODIPY FL/pH7.2 - EX: 505 nm EM: 512 nm

EX: **465-495** nm DM 505 nm EM: **515-555** nm • 39002

EX: **450-490** nm DM 525 nm EM: **500-550** nm • 49002

CAL Fluor® Red 590 - EX: 569 nm EM: 591 nm

EX: **528-553** nm DM 565 nm EM: **578-633** nm • 39004

EX: **532-557** nm DM 605 nm EM: **570-640** nm • 49004

CAL Fluor® Red 610 - EX: 590 nm EM: 610 nm

EX: **540-580** nm DM 600 nm EM: **615-665** nm • 39010

Calcein - EX: 494 nm EM: 517 nm

EX: **465-495** nm DM 505 nm EM: **515-555** nm • 39002

EX: **450-490** nm DM 525 nm EM: **500-550** nm • 49002

EX: **460-500** nm DM 510 nm EM: **510-560** nm • 49011

Calcium Green™-1 - EX: 506 nm EM: 531 nm

EX: **465-495** nm DM 505 nm EM: **515-555** nm • 39002

EX: **450-490** nm DM 525 nm EM: **500-550** nm • 49002

EX: **460-500** nm DM 510 nm EM: **510-560** nm • 49011

Calcofluor White - EX: 350 nm EM: 475 nm EX: 361-389 nm DM: 415 nm EM: 435 nm (LP) • 19000	DyLight 750 - EX: 751 nm EM: 772 nm EX: 672-747 nm DM 760 nm EM: 765-855 nm • 49007
Cerulean - EX: 433 nm EM: 475 nm EX: 425-445 nm DM 455 nm EM: 465-495 nm • 39001	ECFP - EX: 434 nm EM: 477 nm EX: 425-445 nm DM 455 nm EM: 465-495 nm • 39001
CFP - EX: 433 nm EM: 475 nm EX: 425-445 nm DM 455 nm EM: 465-495 nm • 39001	EGFP - EX: 488 nm EM: 507 nm EX: 465-495 nm DM 505 nm EM: 515-555 nm • 39002 EX: 450-490 nm DM 525 nm EM: 500-550 nm • 49002
Citrine - EX: 514 nm EM: 529 nm EX: 485-505 nm DM 515 nm EM: 525-555 nm • 39003 EX: 490-510 nm DM 515 nm EM: 520-550 nm • 49003	Emerald GFP - EX: 489 nm EM: 510 nm EX: 465-495 nm DM 505 nm EM: 515-555 nm • 39002 EX: 450-490 nm DM 525 nm EM: 500-550 nm • 49002
Coumarin - EX: 384 nm EM: 470 nm EX: 390-420 nm DM: 440 nm EM: 450 nm (LP) • 19011	EYFP/pH 7 - EX: 514 nm EM: 527 nm EX: 485-505 nm DM 515 nm EM: 525-555 nm • 39003 EX: 490-510 nm DM 515 nm EM: 520-550 nm • 49003
Cy2™ - EX: 489 nm EM: 506 nm EX: 465-495 nm DM 505 nm EM: 515-555 nm • 39002 EX: 450-490 nm DM 525 nm EM: 500-550 nm • 49002 EX: 460-500 nm DM 510 nm EM: 510-560 nm • 49011	FITC - EX: 490 nm EM: 525 nm EX: 465-495 nm DM 505 nm EM: 515-555 nm • 39002 EX: 450-490 nm DM 525 nm EM: 500-550 nm • 49002 EX: 460-500 nm DM 510 nm EM: 510-560 nm • 49011
Cy3.5™ - EX: 581 nm EM: 598 nm EX: 540-580 nm DM 600 nm EM: 615-665 nm • 39010 EX: 540-580 nm DM 585 nm EM: 593-667 nm • 49008	Fluo-4 - EX: 494 nm EM: 516 nm EX: 465-495 nm DM 505 nm EM: 515-555 nm • 39002 EX: 450-490 nm DM 525 nm EM: 500-550 nm • 49002 EX: 460-500 nm DM 510 nm EM: 510-560 nm • 49011
Cy3™ - EX: 552 nm EM: 570 nm EX: 528-553 nm DM 565 nm EM: 578-633 nm • 39004 EX: 532-557 nm DM 605 nm EM: 570-640 nm • 49004	FluoroGold - EX: 390 nm EM: 600 nm EX: 361-389 nm DM: 415 nm EM: 515 nm (LP) • 19012
Cy5™ - EX: 649 nm EM: 670 nm EX: 595-645 nm DM 655 nm EM: 665-715 nm • 39007 EX: 590-650 nm DM 660 nm EM: 663-737 nm • 49006 EX: 625-655 nm DM 660 nm EM: 665-715 nm • 49009	FM™ 1-43 - EX: 479 nm EM: 598 nm EX: 465-495 nm DM: 505 nm EM: 600 nm (LP) • 19010
Cy7™ - EX: 743 nm EM: 767 nm EX: 672-747 nm DM 760 nm EM: 765-855 nm • 49007	FM™ 4-64 - EX: 515 nm EM: 740 nm EX: 540-580 nm DM: 600 nm EM: 610 nm (LP) • 19006
DAPI - EX: 359 nm EM: 461 nm EX: 361-389 nm DM 415 nm EM: 435-485 nm • 39000	FM™ 4-64 - EX: 515 nm EM: 740 nm EX: 465-495 nm DM: 505 nm EM: 600 nm (LP) • 19010
Draq5 - EX: 647 nm EM: 683 nm EX: 595-645 nm DM 655 nm EM: 665-715 nm • 39007	FusionRed - EX: 576 nm EM: 603 nm EX: 540-580 nm DM 600 nm EM: 615-665 nm • 39010 EX: 540-580 nm DM 585 nm EM: 593-667 nm • 49008
DsRed - EX: 557 nm EM: 584 nm EX: 528-553 nm DM 565 nm EM: 578-633 nm • 39004 EX: 532-557 nm DM 605 nm EM: 570-640 nm • 49004	GFP - EX: 488 nm EM: 507 nm EX: 465-495 nm DM 505 nm EM: 515-555 nm • 39002 EX: 450-490 nm DM 525 nm EM: 500-550 nm • 49002
DyLight 350 - EX: 352 nm EM: 435 nm EX: 361-389 nm DM 415 nm EM: 435-485 nm • 39000	Hoechst 33258 - EX: 352 nm EM: 461 nm EX: 361-389 nm DM 415 nm EM: 435-485 nm • 39000
DyLight 405 - EX: 399 nm EM: 433 nm EX: 390-420 nm DM: 440 nm EM: 450 nm (LP) • 19011	Lucifer Yellow - EX: 428 nm EM: 540 nm EX: 400-440 nm DM 455 nm EM: 515-555 nm • 39008
DyLight 488 - EX: 492 nm EM: 517 nm EX: 450-495 nm DM 505 nm EM: 515-555 nm • 39002 EX: 450-490 nm DM 525 nm EM: 500-550 nm • 49002 EX: 460-500 nm DM 510 nm EM: 510-560 nm • 49011	LysoTracker Blue/MeOH - EX: 373 nm EM: 425 nm EX: 361-389 nm DM 415 nm EM: 435-485 nm • 39000
DyLight 549 - EX: 554 nm EM: 569 nm EX: 528-553 nm DM 565 nm EM: 578-633 nm • 39004 EX: 532-557 nm DM 605 nm EM: 570-640 nm • 49004	LysoTracker Green/pH 5.2 - EX: 504 nm EM: 511 nm EX: 465-495 nm DM 505 nm EM: 515-555 nm • 39002 EX: 450-490 nm DM 525 nm EM: 500-550 nm • 49002
DyLight 594 - EX: 592 nm EM: 616 nm EX: 540-580 nm DM 600 nm EM: 615-665 nm • 39010 EX: 540-580 nm DM 585 nm EM: 593-667 nm • 49008	LysoTracker Red/pH 5.2 - EX: 577 nm EM: 590 nm EX: 540-580 nm DM 585 nm EM: 593-667 nm • 49008
DyLight 649 - EX: 652 nm EM: 667 nm EX: 595-645 nm DM 655 nm EM: 665-715 nm • 39007 EX: 590-650 nm DM 660 nm EM: 663-737 nm • 49006 EX: 625-655 nm DM 660 nm EM: 665-715 nm • 49009	LysoTracker Yellow HCK-123 - EX: 486 nm EM: 563 nm EX: 465-495 nm DM 505 nm EM: 590-650 nm • 39009
	mCherry - EX: 587 nm EM: 610 nm EX: 540-580 nm DM 600 nm EM: 615-665 nm • 39010 EX: 540-580 nm DM 585 nm EM: 593-667 nm • 49008

mCitrine - EX: 514 nm EM: 529 nm
 EX: **485-505** nm DM 515 nm EM: **525-555** nm • 39003
 EX: **490-510** nm DM 515 nm EM: **520-550** nm • 49003

MitoTracker Green FM/MeOH - EX: 490 nm EM: 516 nm
 EX: **465-495** nm DM 505 nm EM: **515-555** nm • 39002
 EX: **450-490** nm DM 525 nm EM: **500-550** nm • 49002

MitoTracker Orange/MeOH - EX: 551 nm EM: 576 nm
 EX: **528-553** nm DM 565 nm EM: **578-633** nm • 39004
 EX: **532-557** nm DM 605 nm EM: **570-640** nm • 49004

MitoTracker Red/MeOH - EX: 578 nm EM: 599 nm
 EX: **540-580** nm DM 600 nm EM: **615-665** nm • 39010
 EX: **540-580** nm DM 585 nm EM: **593-667** nm • 49008

MitoTracker Deep Red 633/MeOH - EX: 644 nm EM: 665 nm
 EX: **590-650** nm DM 660 nm EM: **663-737** nm • 49006
 EX: **625-655** nm DM 660 nm EM: **665-715** nm • 49009

mRFP1 - EX: 584 nm EM: 607 nm
 EX: **540-580** nm DM 600 nm EM: **615-665** nm • 39010
 EX: **540-580** nm DM 585 nm EM: **593-667** nm • 49008

mWasabi - EX: 493 nm EM: 509 nm
 EX: **465-495** nm DM 505 nm EM: **515-555** nm • 39002
 EX: **450-490** nm DM 525 nm EM: **500-550** nm • 49002

Nile Blue - EX: 631 nm EM: 660 nm
 EX: **590-650** nm DM 660 nm EM: **663-737** nm • 49006

Oregon Green™ 488 - EX: 490 nm EM: 514 nm
 EX: **465-495** nm DM 505 nm EM: **515-555** nm • 39002
 EX: **450-490** nm DM 525 nm EM: **500-550** nm • 49002

Oregon Green™ 514 - EX: 506 nm EM: 526 nm
 EX: **485-505** nm DM 515 nm EM: **525-555** nm • 39003
 EX: **490-510** nm DM 515 nm EM: **520-550** nm • 49003

Pacific Blue - EX: 405 nm EM: 455 nm
 EX: **390-420** nm DM: 440 nm EM: **450** nm (LP) • 19011

Propidium Iodide - EX: 536 nm EM: 617 nm
 EX: **528-552** nm DM 565 nm EM: **590-650** nm • 39005
 EX: **530-560** nm DM 570 nm EM: **590-650** nm • 49005

Pulsar™ 650 - EX: 460 nm EM: 650 nm
 EX: **465-495** nm DM: 505 nm EM: **600** nm (LP) • 19010

Quasar® 670 - EX: 647 nm EM: 670 nm
 EX: **595-645** nm DM 655 nm EM: **665-715** nm • 39007

Rhod-2 - EX: 552 nm EM: 581 nm
 EX: **528-553** nm DM 565 nm EM: **578-633** nm • 39004
 EX: **532-557** nm DM 605 nm EM: **570-640** nm • 49004

Rhodamine 123 - EX: 507 nm EM: 529 nm
 EX: **485-505** nm DM 515 nm EM: **525-555** nm • 39003
 EX: **490-510** nm DM 515 nm EM: **520-550** nm • 49003

Rhodamine Red™-X - EX: 570 nm EM: 590 nm
 EX: **540-580** nm DM 600 nm EM: **615-665** nm • 39010
 EX: **540-580** nm DM 585 nm EM: **593-667** nm • 49008

Sulforhodamine 101 - EX: 586 nm EM: 605 nm
 EX: **540-580** nm DM 600 nm EM: **615-665** nm • 39010

SYBR® Green I - EX: 498 nm EM: 522 nm
 EX: **465-495** nm DM 505 nm EM: **515-555** nm • 39002
 EX: **450-490** nm DM 525 nm EM: **500-550** nm • 49002
 EX: **460-500** nm DM 510 nm EM: **510-560** nm • 49011

SYTO 9/DNA - EX: 483 nm EM: 500 nm
 EX: **465-495** nm DM 505 nm EM: **515-555** nm • 39002
 EX: **450-490** nm DM 525 nm EM: **500-550** nm • 49002
 EX: **460-500** nm DM 510 nm EM: **510-560** nm • 49011

SYTO® 60 - EX: 652 nm EM: 678 nm
 EX: **595-645** nm DM 655 nm EM: **665-715** nm • 39007
 EX: **590-650** nm DM 660 nm EM: **663-737** nm • 49006
 EX: **625-655** nm DM 660 nm EM: **665-715** nm • 49009

TagRFP - EX: 556 nm EM: 584 nm
 EX: **528-553** nm DM 565 nm EM: **578-633** nm • 39004

TAMRA - EX: 555 nm EM: 580 nm
 EX: **528-553** nm DM 565 nm EM: **578-633** nm • 39004
 EX: **532-557** nm DM 605 nm EM: **570-640** nm • 49004

Texas Red® - EX: 595 nm EM: 620 nm
 EX: **540-580** nm DM 600 nm EM: **615-665** nm • 39010
 EX: **540-580** nm DM 585 nm EM: **593-667** nm • 49008

Texas Red®-X - EX: 595 nm EM: 615 nm
 EX: **540-580** nm DM 600 nm EM: **615-665** nm • 39010
 EX: **540-580** nm DM 585 nm EM: **593-667** nm • 49008

TO-PRO™-3 - EX: 642 nm EM: 661 nm
 EX: **595-645** nm DM 655 nm EM: **665-715** nm • 39007

Topaz - EX: 514 nm EM: 529 nm
 EX: **485-505** nm DM 515 nm EM: **525-555** nm • 39003
 EX: **490-510** nm DM 515 nm EM: **520-550** nm • 49003

TRITC - EX: 555 nm EM: 580 nm
 EX: **528-553** nm DM 565 nm EM: **578-633** nm • 39004

Turbo FP650 - EX: 592 nm EM: 650 nm
 EX: **540-580** nm DM: 600 nm EM: **610** nm (LP) • 19006
 EX: **540-580** nm DM 585 nm EM: **593-667** nm • 49008

wtGFP - EX: 475 nm EM: 509 nm
 EX: **425-475** nm DM: 485 nm EM: **495** nm (LP) • 19008

X-rhod-1/Ca2+ - EX: 580 nm EM: 601 nm
 EX: **540-580** nm DM 600 nm EM: **615-665** nm • 39010

ZsGreen1 - EX: 493 nm EM: 505 nm
 EX: **465-495** nm DM 505 nm EM: **515-555** nm • 39002

NEUTRAL DENSITY FILTERS:

25 mm diameter, 1 mm thick and unmounted

AE.3250.ND01 Neutral density filter, ND 0.10 (T 80 %)

32 mm diameter, 1 mm thick and unmounted

- AE.3252.ND01** Neutral density filter, ND 0.10 (T 80 %)
- AE.3252.ND02** Neutral density filter, ND 0.20 (T 65 %)
- AE.3252.ND03** Neutral density filter, ND 0.30 (T 50 %)
- AE.3252.ND04** Neutral density filter, ND 0.40 (T 40 %)
- AE.3252.ND05** Neutral density filter, ND 0.50 (T 32 %)
- AE.3252.ND06** Neutral density filter, ND 0.60 (T 25 %)
- AE.3252.ND10** Neutral density filter, ND 1.0 (T 10 %)
- AE.3252.ND13** Neutral density filter, ND 1.3 (T 5 %)

On request, microscopes can be equipped with more specific, optimized and application related fluorescence filter sets

